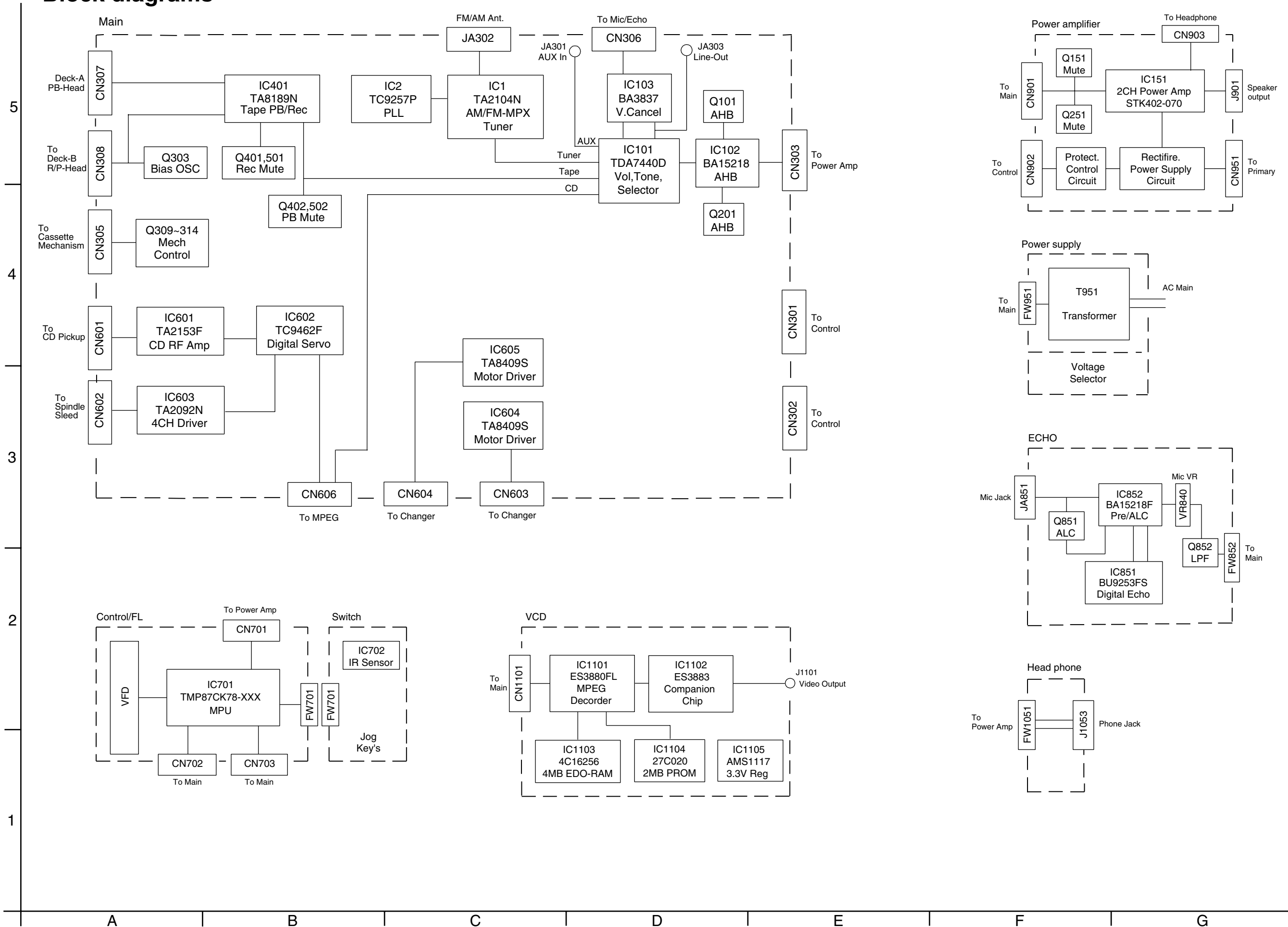


MX-K35V

In regard with component parts appearing on the silk-screen printed side (parts side) of the PWB diagrams, the parts that are printed over with black such as the resistor (■), diode (▬) and ICP (●) or identified by the "▲" mark nearby are critical for safety.

(This regulation does not correspond to J and C version.)

Block diagrams



Standard schematic diagrams

<Main section>

■ Head amplifier, tuner and audio section

Head amplifier section

Cassette mechanism section

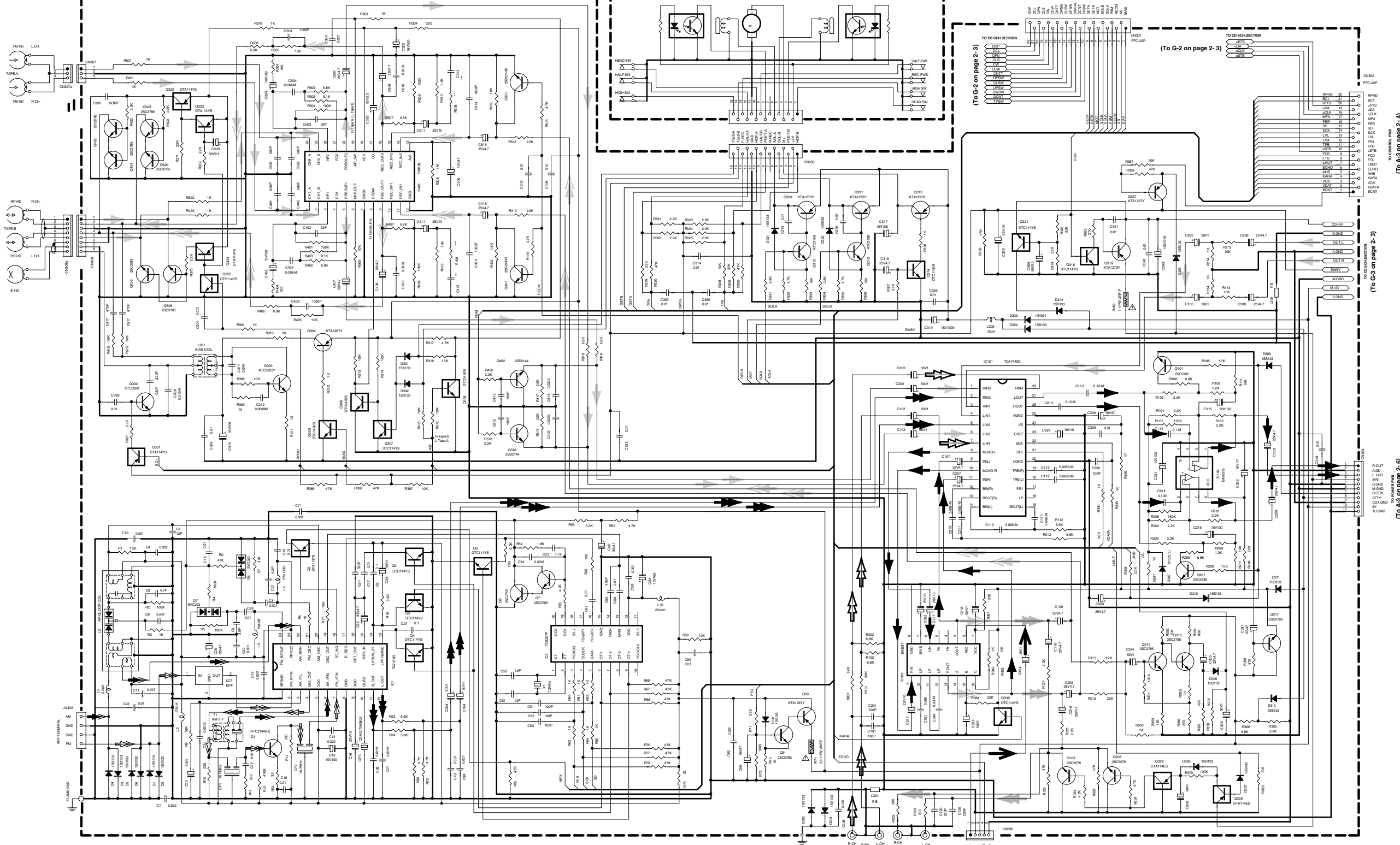
5

4

3

2

1



- ➔ AM RADIO SIGNAL
- ➔ FM RADIO SIGNAL
- ➔ AUX INPUT SIGNAL
- ➔ RADIO SIGNAL
- ➔ MICROPHONE SIGNAL
- ➔ MAIN SIGNAL
- ➔ CD/TAPE PLAY SIGNAL
- ➔ TAPE REC SIGNAL
- ➔ LINE OUT SIGNAL
- ⚠ Parts are safety assurance parts. When replacing those parts make sure to use the specified one.

CD servo control and CD mechanism section

CD servo control section

CD mechanism section

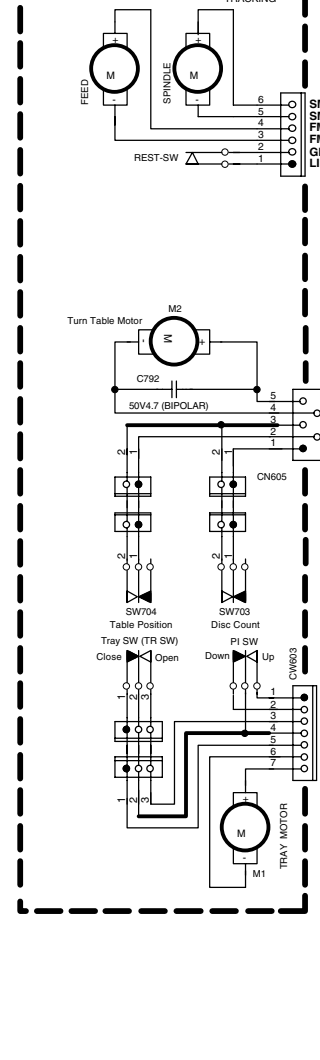
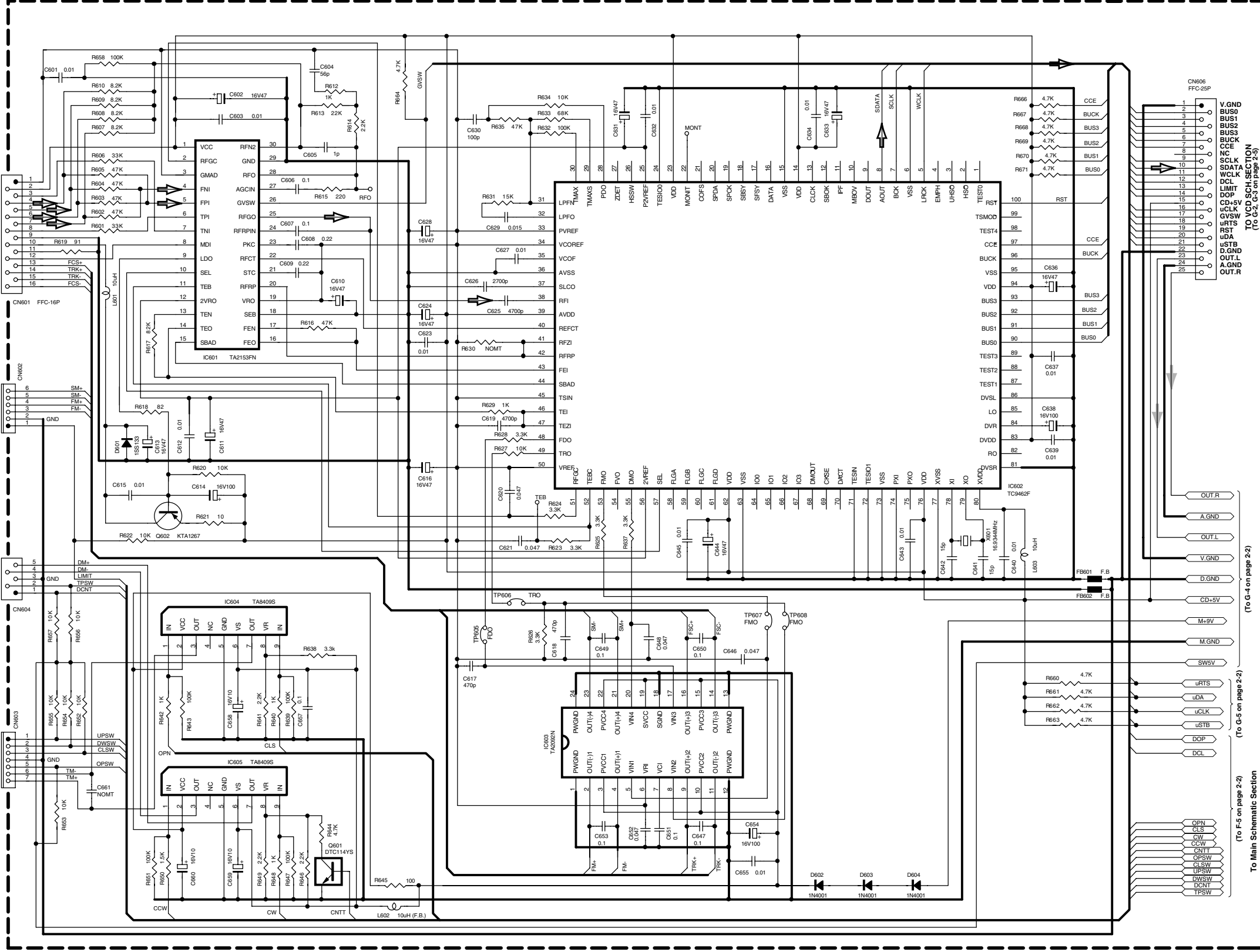
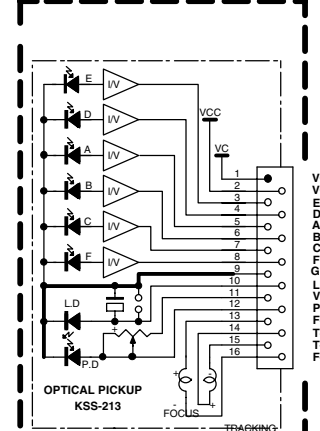
5

4

3

2

1



VIDEO/CD PLAY SIGNAL

V.GND
 BUS0
 BUS1
 BUS2
 BUS3
 BUCK
 CCE
 NC
 SCLK
 SDATA
 WCLK
 DCL
 LIMIT
 DOP
 CD+5V
 uCLK
 GVSW
 uRTS
 RST
 uDA
 uSTB
 D.GND
 OUT.L
 A.GND
 OUT.R

CN606
 FFC-25P

1
 2
 3
 4
 5
 6
 7
 8
 9
 10
 11
 12
 13
 14
 15
 16
 17
 18
 19
 20
 21
 22
 23
 24
 25

TO VCD SCH. SECTION
 (To G-2 on page 2-2)

OUT.R
 A.GND
 OUT.L
 V.GND
 D.GND
 CD+5V
 M+9V
 M.GND
 SWSV
 uRTS
 uDA
 uCLK
 uSTB
 DOP
 DCL

(To G-4 on page 2-2)
 (To G-5 on page 2-2)
 To Main Schematic Section
 (To F-5 on page 2-2)

A

B

C

D

E

F

G

<Front section>

Control/FL and switch section

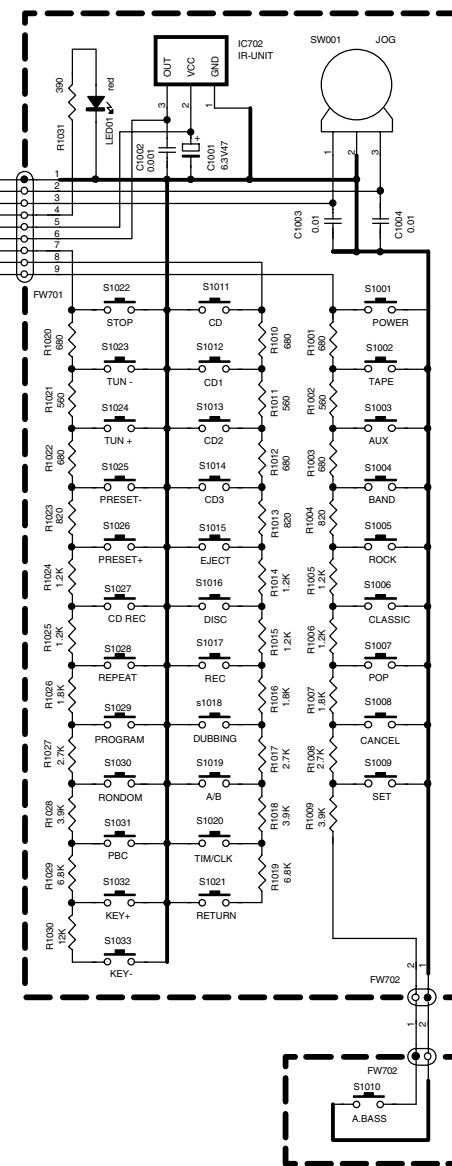
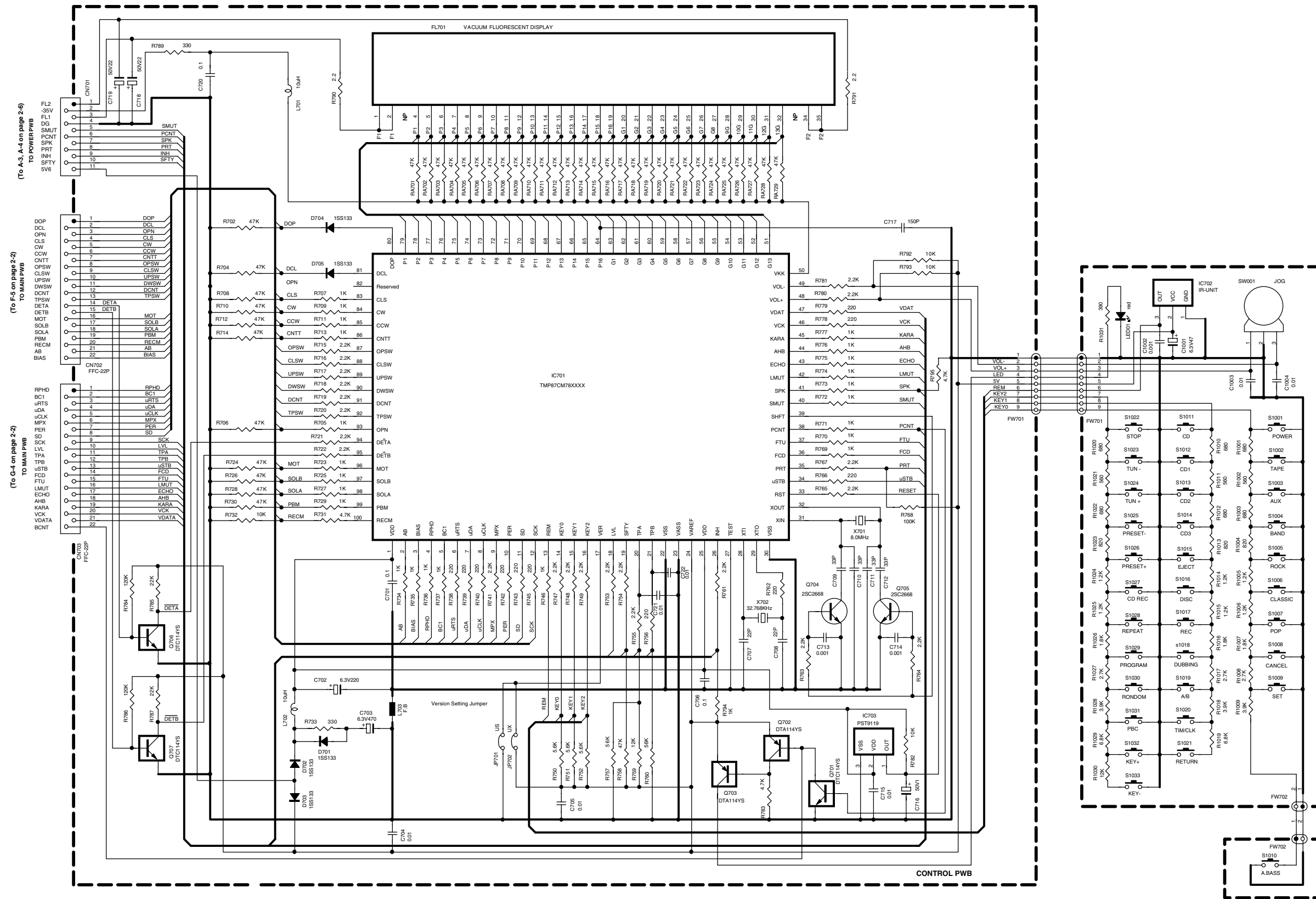
5

4

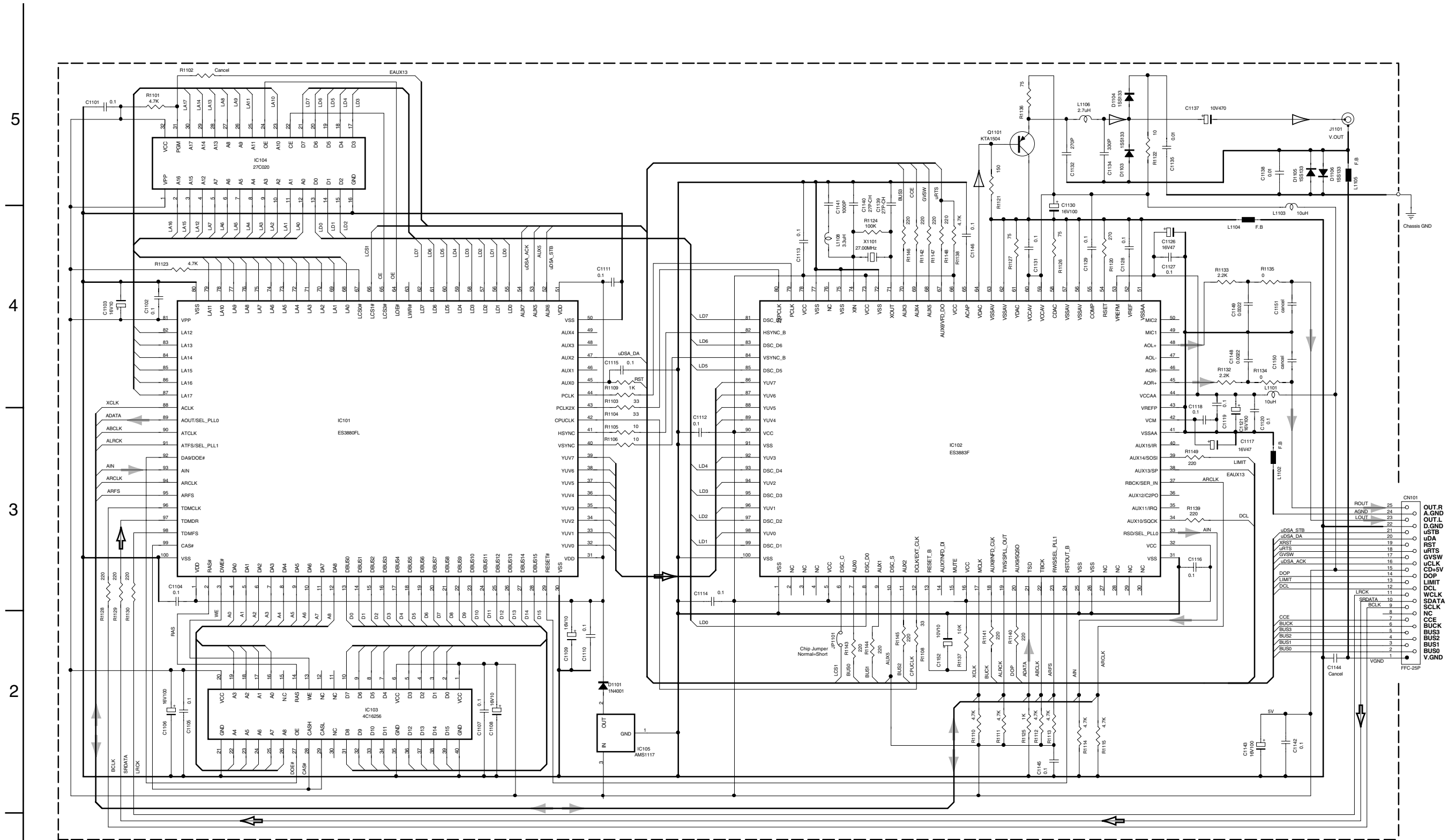
3

2

1



VCD section



- ➔ CD SIGNAL
- ▶ VIDEO SIGNAL
- ⇄ VIDEO/CD PLAY SIGNAL

To Main Board (To G-1, G-5 on page 2-3)

5
4
3
2
1

A B C D E F G 2-5

■ Main amplifier section

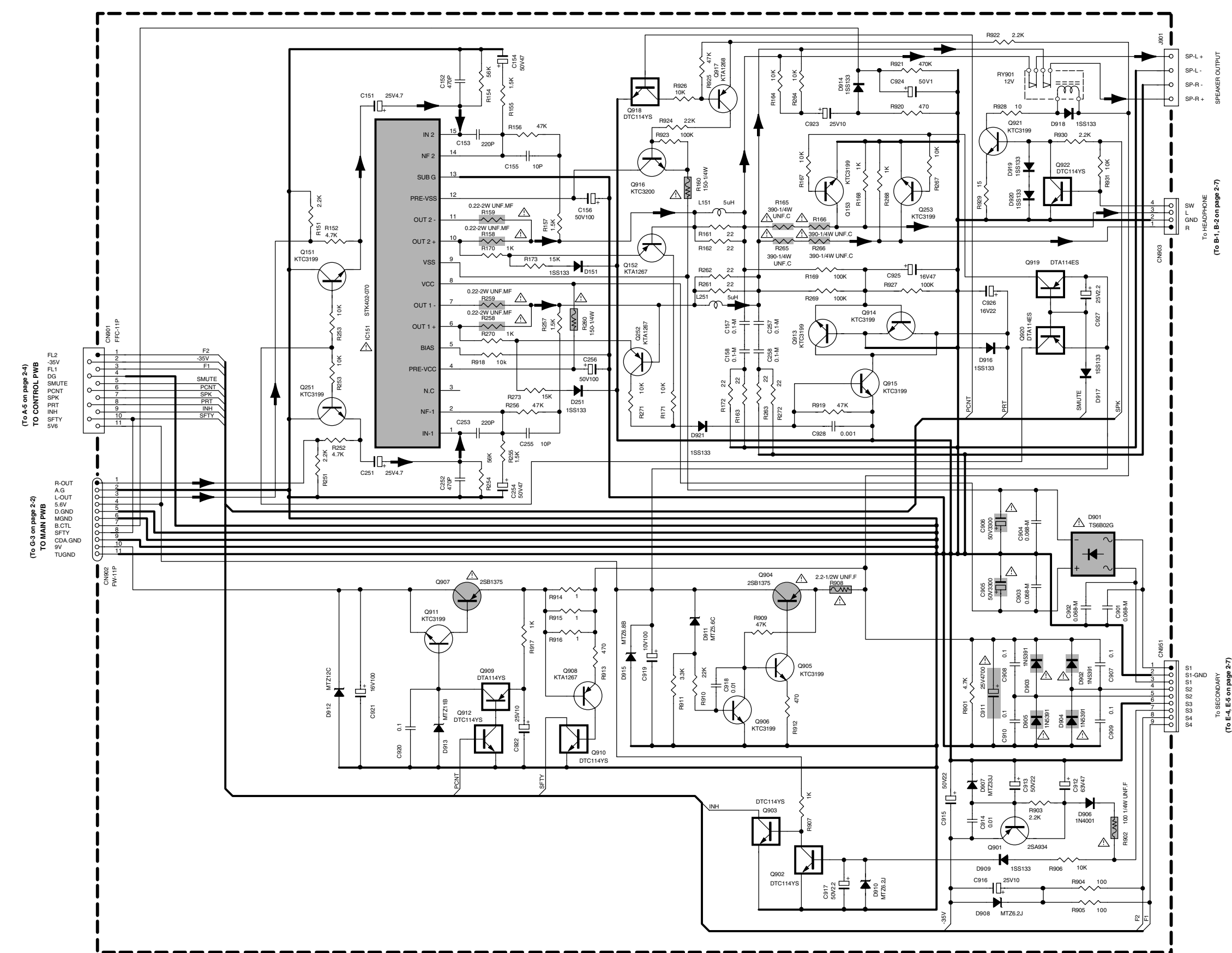
5

4

3

2

1



(To A-5 on page 2-4)
TO CONTROL PWB

FL2 -35V
FL1 DG
SMUTE POINT
SPK INH
PRT INH
SFTY SV6

(To G-3 on page 2-2)
TO MAIN PWB

R-OUT
A.G
L-OUT
5.6V
D.GND
MGND
B.CTL
SFTY
CDA.GND
9V
TUGND

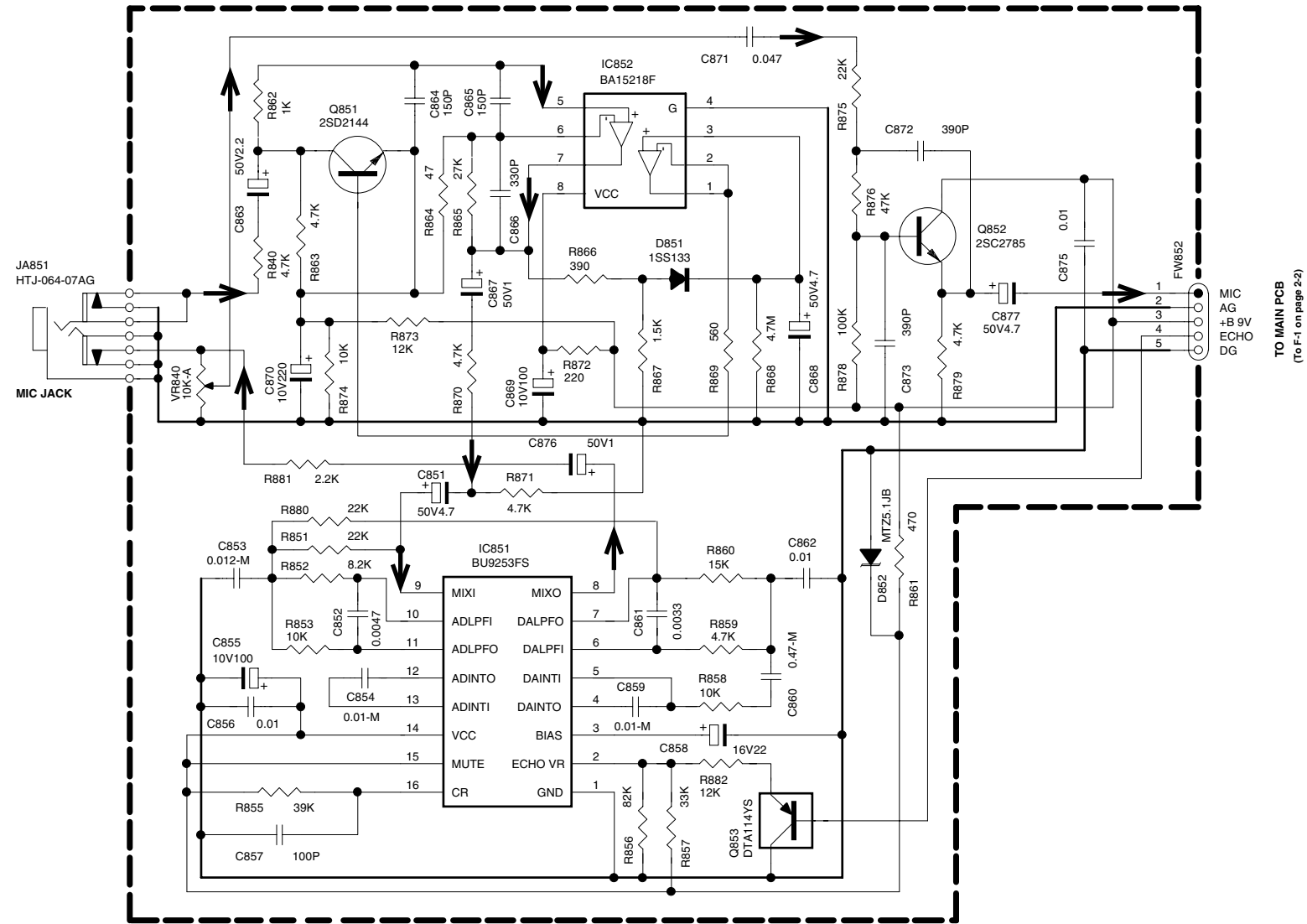
To HEADPHONE
(To B-1, B-2 on page 2-7)

To SECONDARY
(To E-4, E-5 on page 2-7)

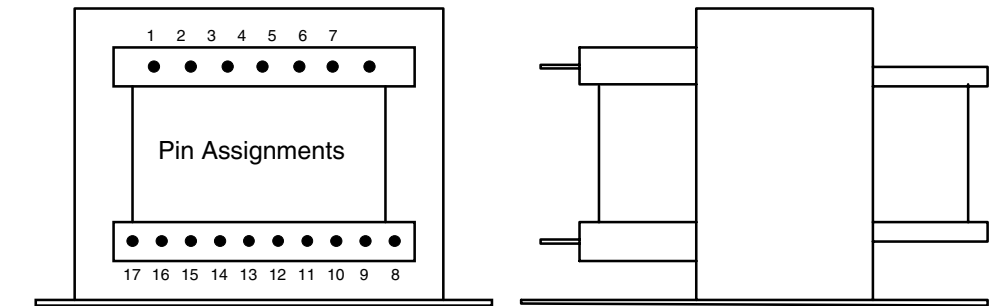
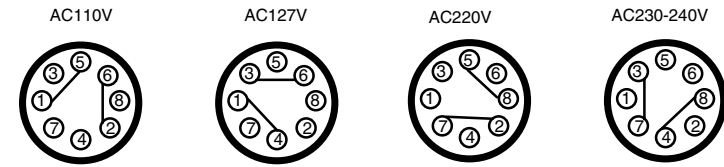
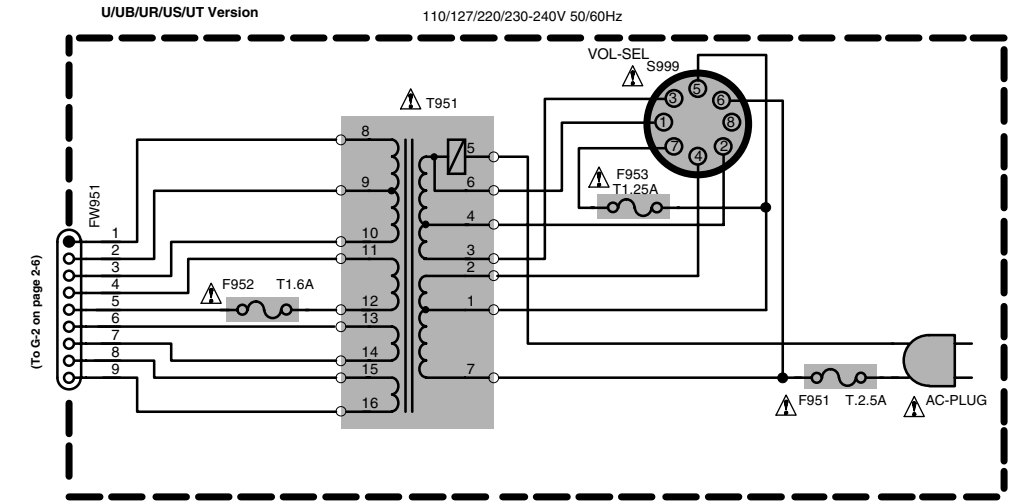
➔ MAIN SIGNAL

⚠ Parts are safety assurance parts. When replacing those parts make sure to use the specified one.

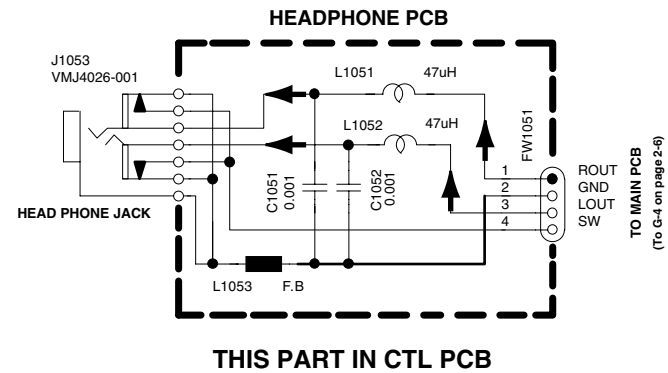
ECHO section



Power supply section



Head phone section



▲ Parts are safety assurance parts. When replacing those parts make sure to use the specified one.

➔ MICROPHONE SIGNAL
➔ MAIN SIGNAL

■ Power amplifier board

Note : This is a printed circuit board on a silk screen print.
This method enables the patterns of both surfaces of the printed circuit board to be shown because of the transparency of the silk screen print.

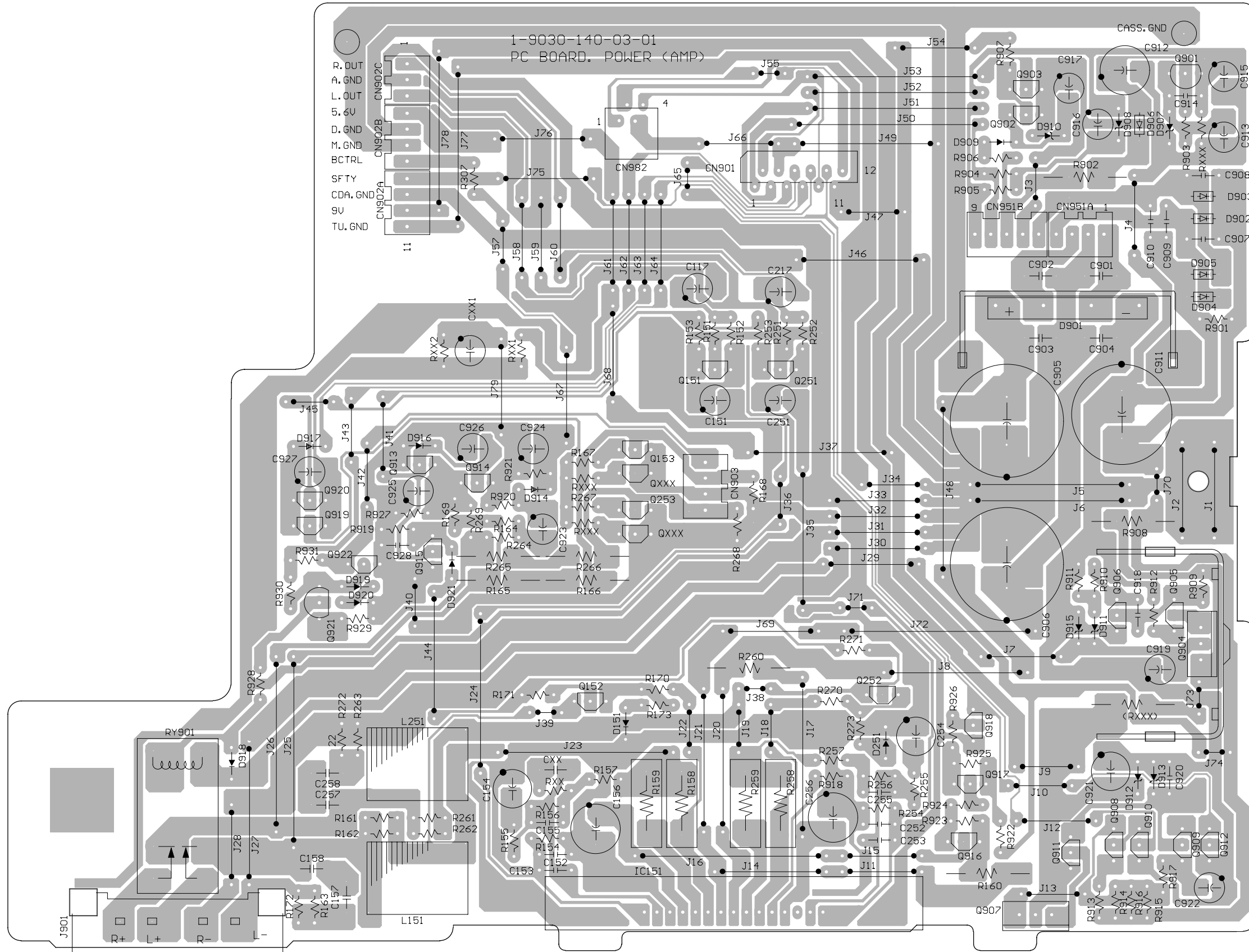
5

4

3

2

1

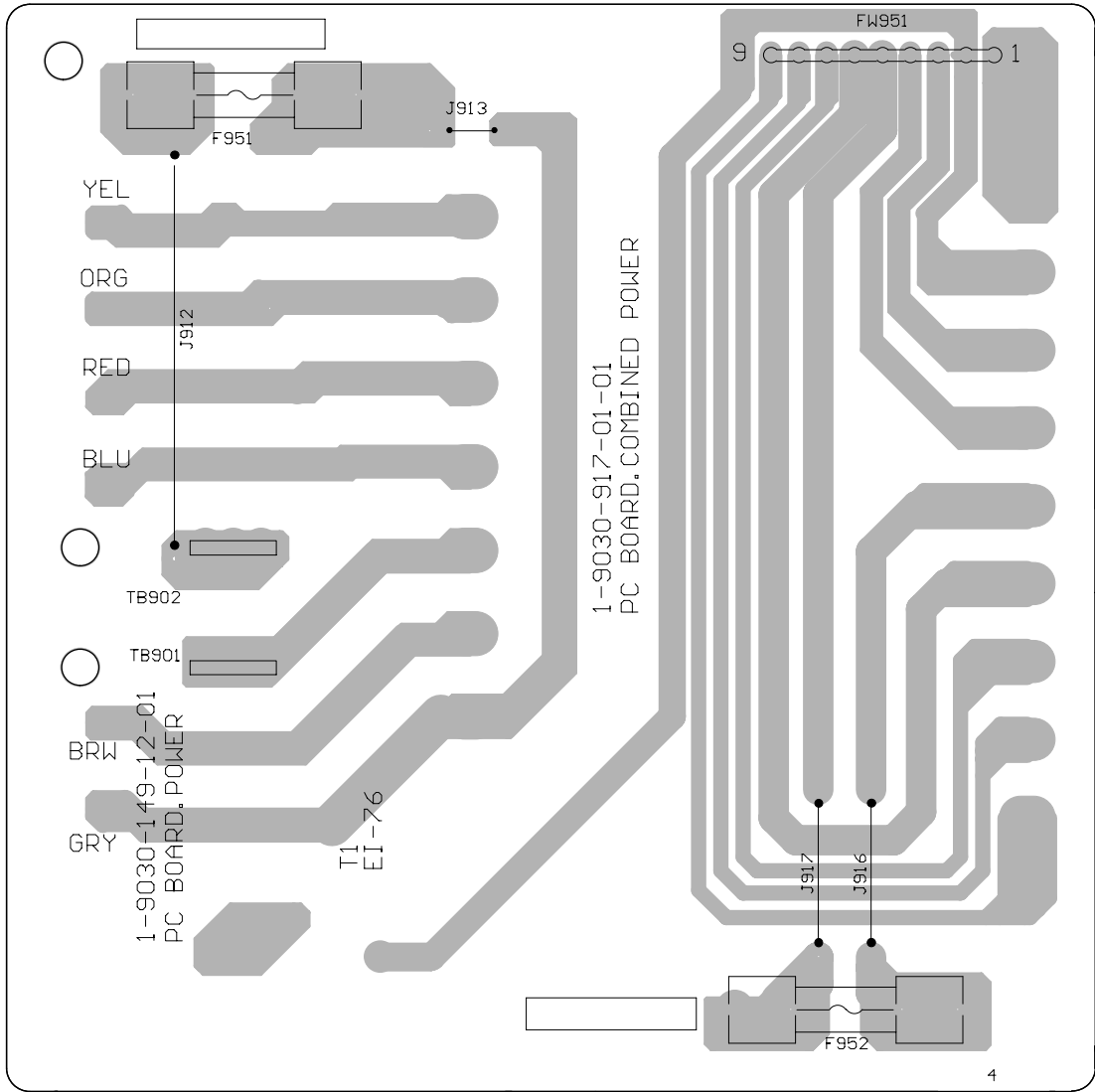


A B C D E F G H

■ Power supply board

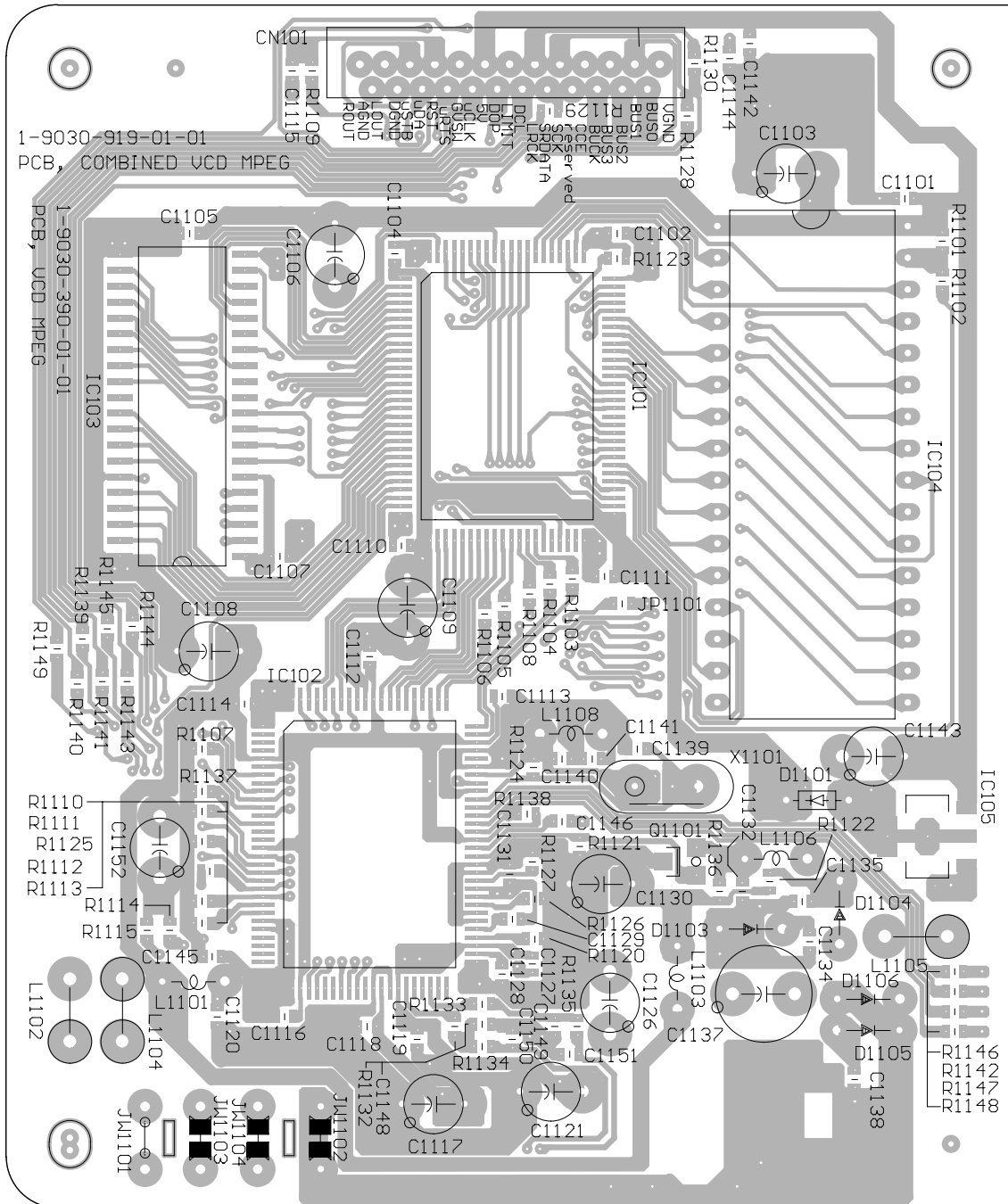
Note : This is a printed circuit board on a silk screen print.
This method enables the patterns of both surfaces of the printed circuit board to be shown because of the transparency of the silk screen print.

5
4
3
2
1



■ VCD board

Surface side view



5

4

3

2

1

2-12

A

B

C

D

Bottom side view

